

Industrial Building

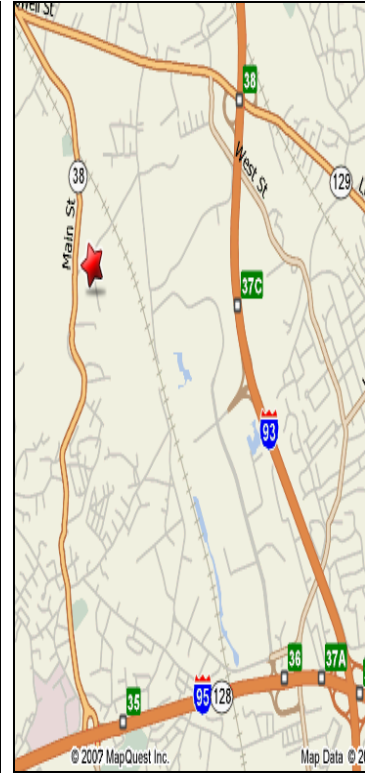
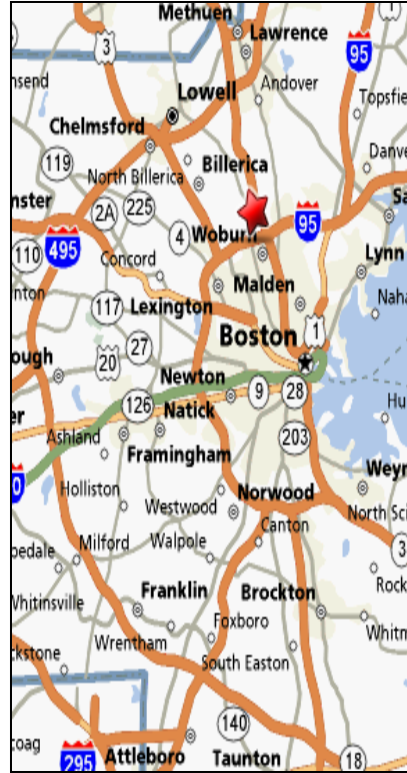
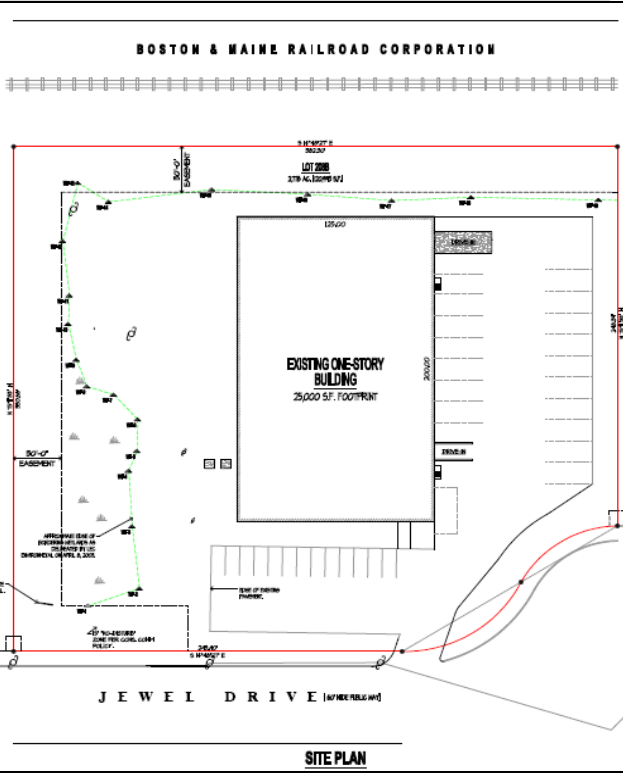
10 Jewel Dr Wilmington, MA 01887



**OFFICE
WAREHOUSE
DISTRIBUTION**

Building Specifications:

Total Area:	25,000
Year Built:	1982
Lot Size:	2.77 Acres
Clear Height:	16'
Column Spacing:	39"+ x 40" +
Parking:	26 Car Spaces 18 Truck Spaces
Loading:	2 Tailboard Doors 1 Drive in Door
Zoning:	GI



Howland Development Company
155 West Street
Wilmington, MA 01887
Tel: 978-657-6400
Fax: 978-658-8582

Contact: Jamie McManus
Tel: 978-657-6400, Ext. 14
Cell: 781-779-5365
jmcmamus@howlanddevelopment.com

Building Notes:

- Landscape and Well-Maintained
- 2.5 Miles to I-95/Rt. 128
- Under 2 Miles From I-93
- Under 15 Miles from Downtown Boston