

# Industrial Building

**155 West St  
Wilmington, MA 01887**



**3,600 S.F., 7,000 S.F.  
& 10,000 S.F.  
SUITES AVAILABLE**

Office / Warehouse Space

Available in Prime

Corner Locations

**Howland Development Company**

155 West Street

Wilmington, MA 01887

Tel: 978-657-6400

Fax: 978-658-8582

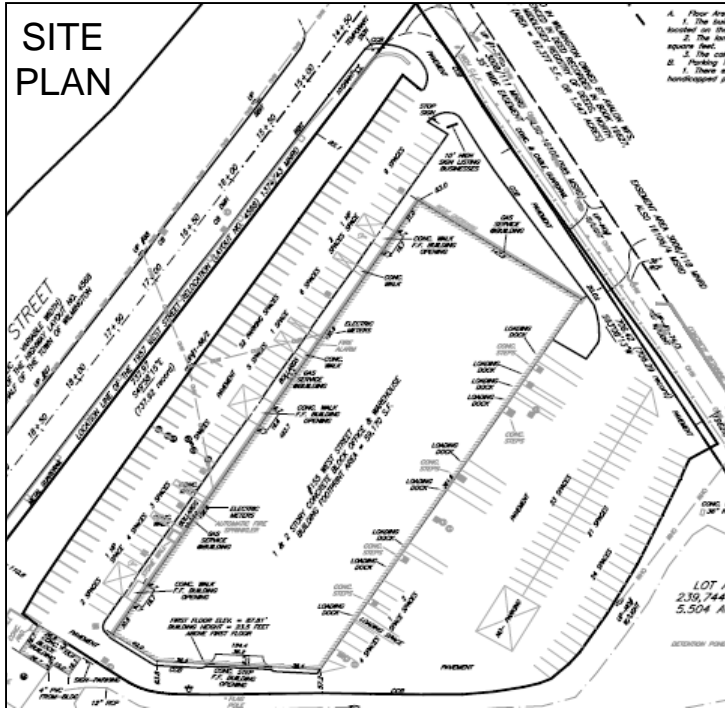
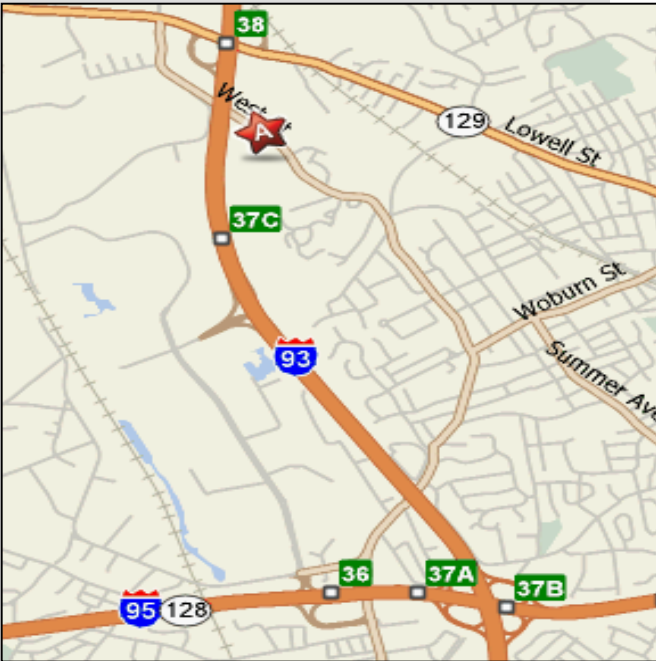
[www.howlanddevelopment.com](http://www.howlanddevelopment.com)

## Building Specifications:

Total Area: 74,041

Year Built: 1984

Lot Size: 5.50 Acres



**Howland Development Company**  
155 West Street  
Wilmington, MA 01887  
Tel: 978-657-6400  
Fax: 978-658-8582

**Contact: Jamie McManus**  
Tel: 978-657-6400, Ext. 14  
Cell: 781-779-5365  
[jmcmamus@howlanddevelopment.com](mailto:jmcmamus@howlanddevelopment.com)

## Building Notes:

- Landscaped and Well-Maintained
- Less than 1 Mile From I-93
- 14 Miles from Downtown Boston
- Offices of Howland Development located on site
- Perfect for Office and Industrial Uses