

Industrial Building

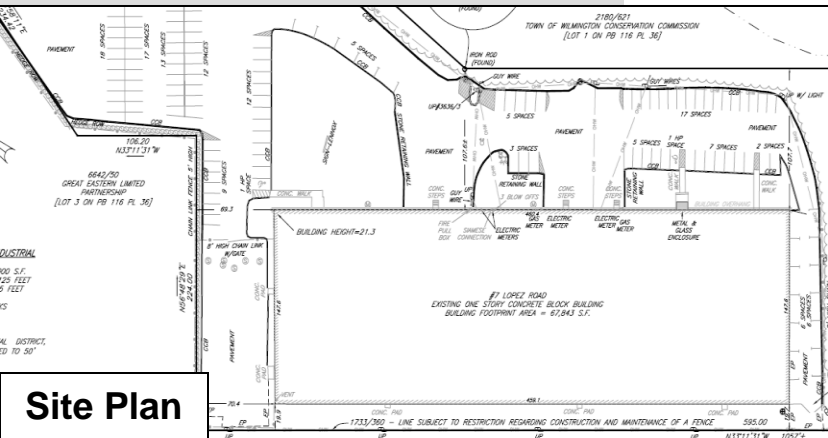
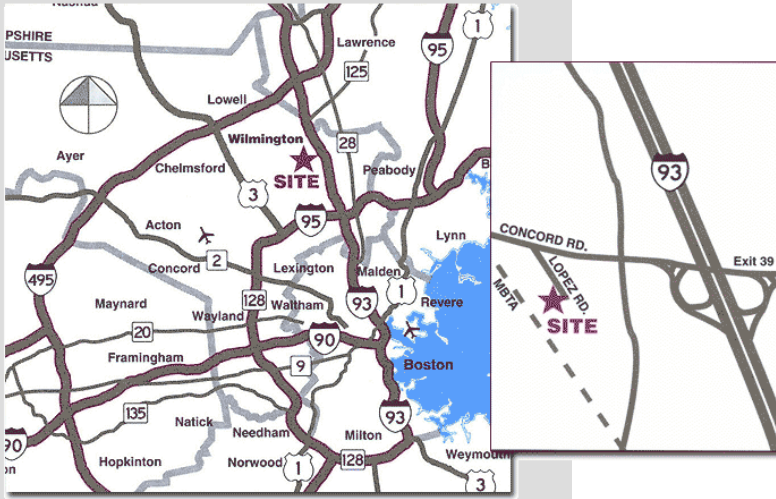
7 Lopez Road Wilmington, MA 01887



Office
Manufacturing
Warehouse

Building Specifications:

Total Area:	67,822 Square Feet
Year Built:	1980
Lot Size:	7.70 Acres
Clear Height:	20'
Column Spacing:	28'-9" x 36'-10"
Loading:	4 tailboard loading docks
Parking:	155 Spaces
Zoning:	GI



Site Plan

Howland Development Company
155 West Street
Wilmington, MA 01887
Tel: 978-657-6400
Fax: 978-658-8582

Contact: Jamie McManus
Tel: 978-657-6400, Ext. 14
Cell: 781-779-5365
jmcmamus@howlanddevelopment.com

Building Notes:

- Situated on 7.7 Landscaped acres
- 100% Air-conditioned
- 1 Mile From I-93
- 16 Miles from Downtown Boston
- Located on Cul-de-sac with only 2 other properties
- 34,000 SqFt Renovated in 2007
- Ideal location for a company concerned with convenient access